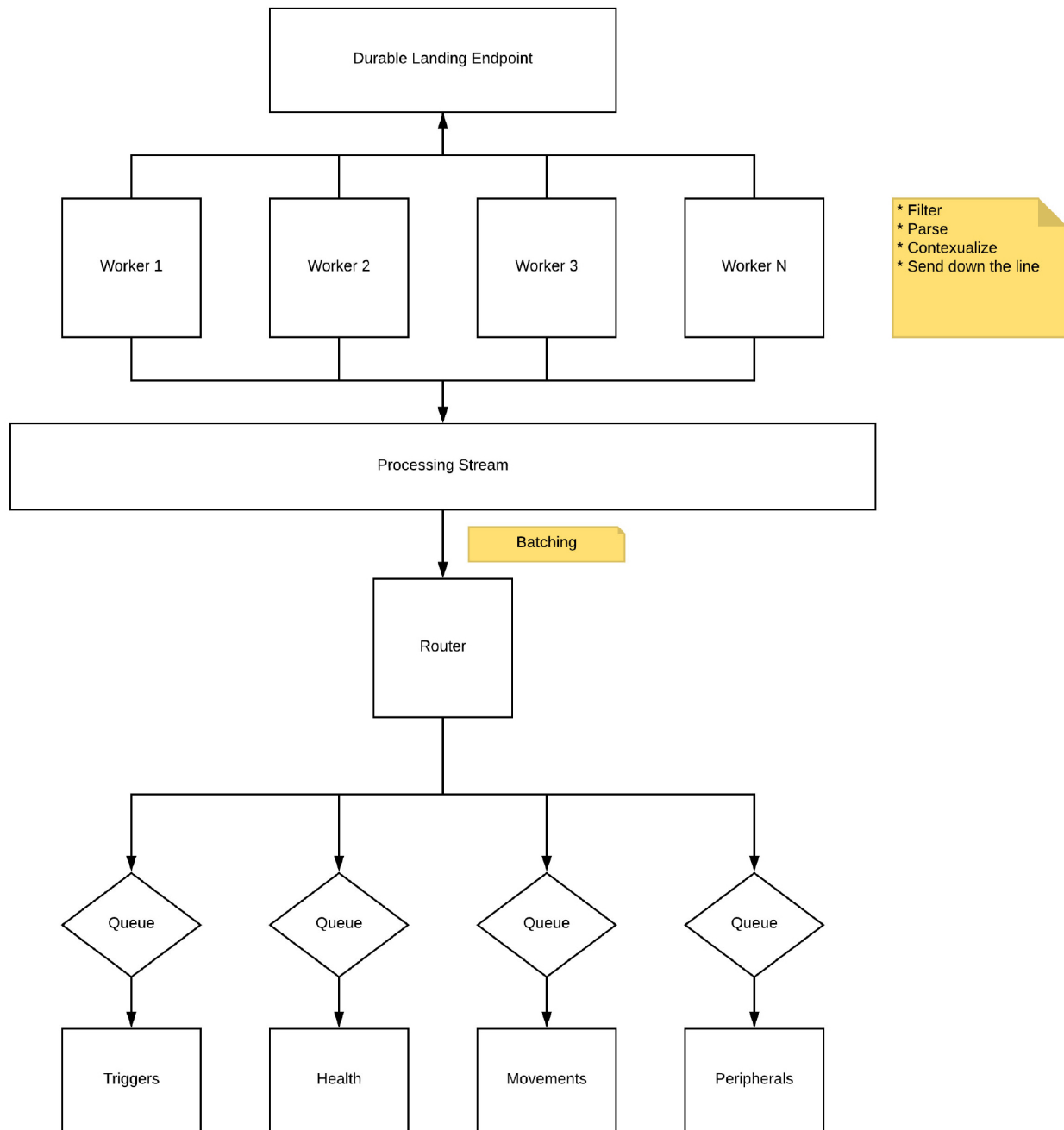


THiNaer™ Architecture Diagram

All transmitted data is encrypted in process and at rest. Data is de-identified and secure from ingest to output. Device data is ingested by the gateway and securely sent to an AWS instance where it is then parsed for use downstream. Parsed data is reassembled, contextualized and shipped to authorized internal and external applications.



Do not share without prior consent from Advantix THiNaer LLC.

The Internet of People, Places & ThingsSM
Building a new class of actionable data.